
SAMSUNG MEDICAL CENTER



About SMC

**SINCE
1994**

Established with goal of patient focus and customer satisfaction

Samsung Medical Center (SMC) has changed the paradigm of the domestic medical system with the advanced slogans of "patient focus" and "customer satisfaction" since the establishment in 1994.



First place in National Customer Satisfaction Index (NCSI) 14 times

During the past 20 years, SMC has received much love and encouragement and has won first place in the National Customer Satisfaction Index (NCSI) 14 times



Brand rank No. 1 among domestic hospitals in 2018

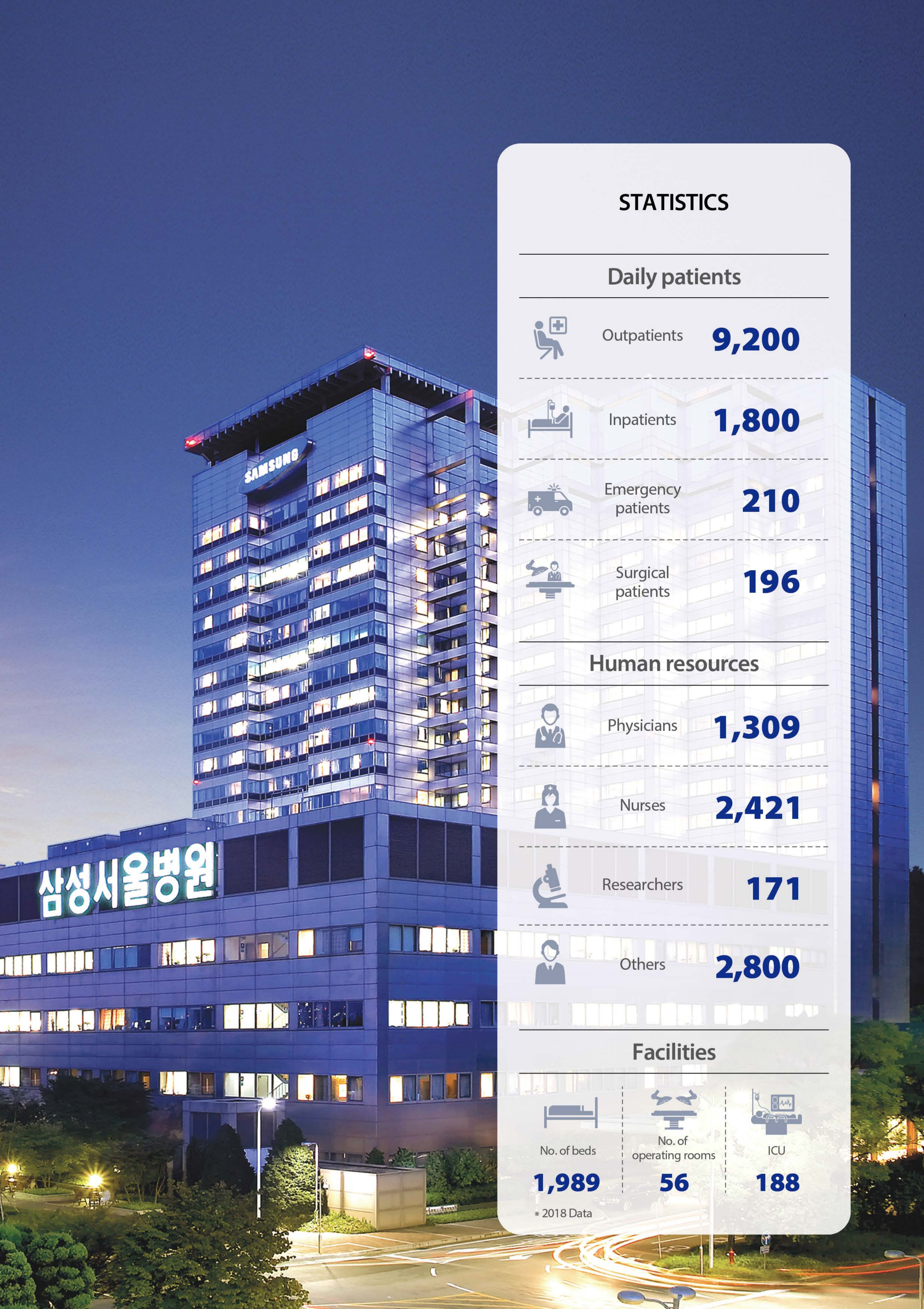
Brand power rank No. 1 among domestic hospitals
Total rank No. 16 including companies



Designated as an official evacuation hospital for the White House

Because of the world-class emergency handling ability and possession of the emergency medical helicopter, SMC has been designated as an official evacuation hospital for the White House since 1996.





STATISTICS

Daily patients



Outpatients **9,200**



Inpatients **1,800**



Emergency patients **210**



Surgical patients **196**

Human resources



Physicians **1,309**



Nurses **2,421**



Researchers **171**



Others **2,800**

Facilities



No. of beds

1,989



No. of operating rooms

56



ICU

188

* 2018 Data

[5-year survival rates of patients with each cancer]

Cancer type	SMC (2008-2017)	KCCR (2012-2016)	SEER (2009-2015)
Gastric cancer	87.8	76.0	31.5
Colcon cancer	92.6	75.9	64.4
Lung cancer	48.3	28.2	19.4
Breast cancer	95.2	92.7	89.8
Liver cancer	54.3	34.6	18.4
Pancreas cancer	17.0	11.4	9.3
NHL (Non-hodgkin lymphoma)	72.3	63.1	72.0
Uterine cancer	84.5	79.8	65.8

* Statistics : KCCR (Korea Central Cancer Registry), SEER (Cancer statistics of the National Cancer Institute, USA)

World best level of patient survival rate

For the effective treatment protocol and critically ill cancer patients, SMC performs face-to-face multi-disciplinary joint treatment, etc. so that the best specialists of each specialty participate in making prompt and accurate treatment plan to maintain the world's best level of patient survival rate



Noninvasive treatment and multi-disciplinary treatment

In Samsung Comprehensive Cancer Center, the **advanced treatment technologies** such as various noninvasive methods, robotic surgery, etc. are applied **for the rapid recovery of patients.**



Robotic operating room

<p>Video-assisted thoracoscopic surgery (Lung cancer)</p> <p>25% (Compared to the total lung cancer cases)</p>	<p>Radiofrequency thermal ablation therapy (Liver cancer)</p> <p>6,000 CASES</p>	<p>Single port laparoscopic surgery (Colon cancer)</p> <p>1,800 CASES</p>	<p>Robotic surgery (prostatectomy)</p> <p>3,000 CASES (prostatectomy)</p>
---	---	--	--

* 2018 Data

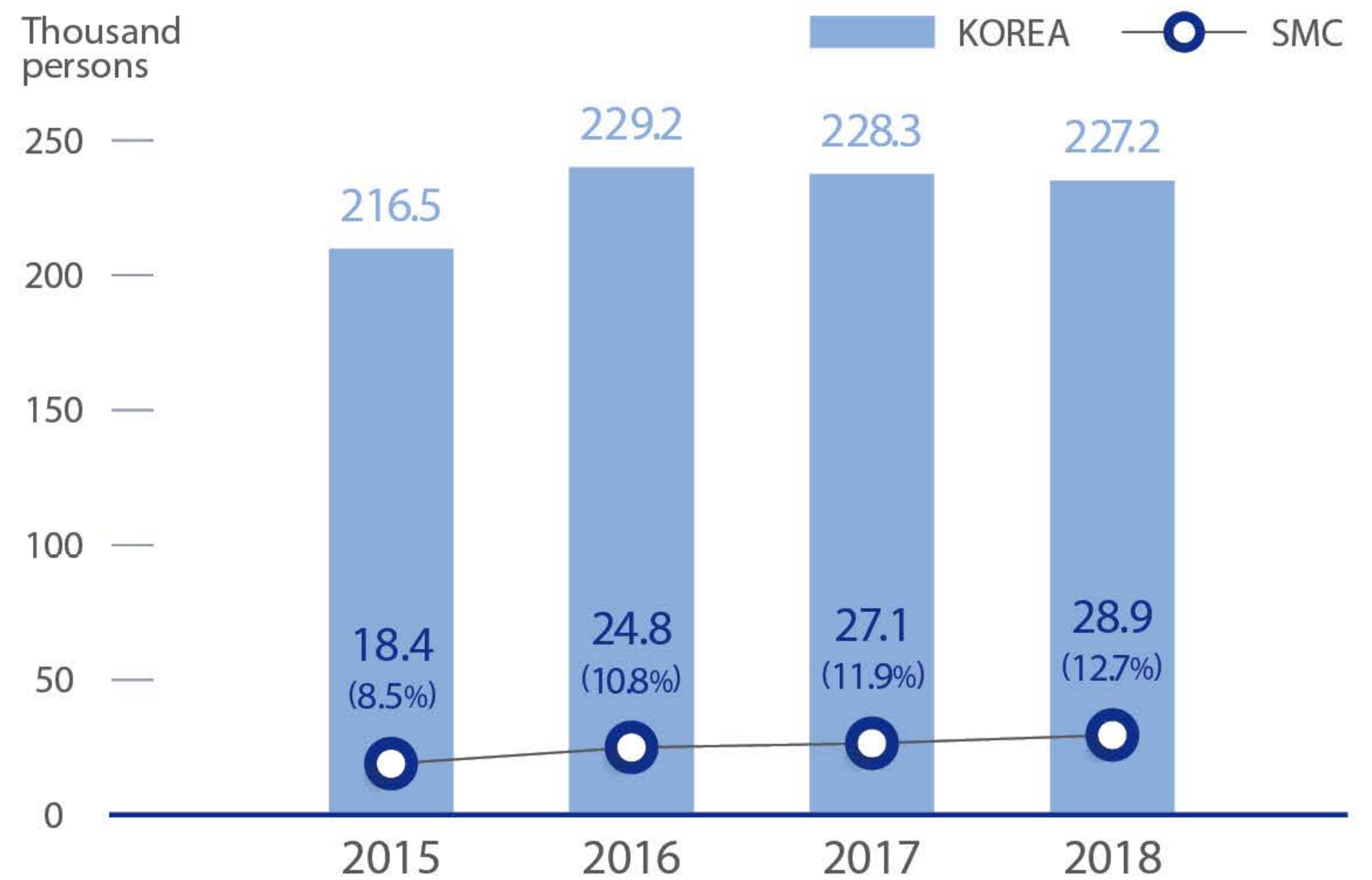
I Cancer patient treatment rate

Based on the Korea's best treatment performance and patient trust, more than 10% of Korean cancer patients are treated in SMC every year to lead the treatment of severe diseases.

Cancer patient treatment in Korea every year **10%** More than

Leading severe disease treatment

[Domestic occurrences per year and no. of cancer patients treated in SMC]



I Proton therapy

Korea's first 2nd generation equipment

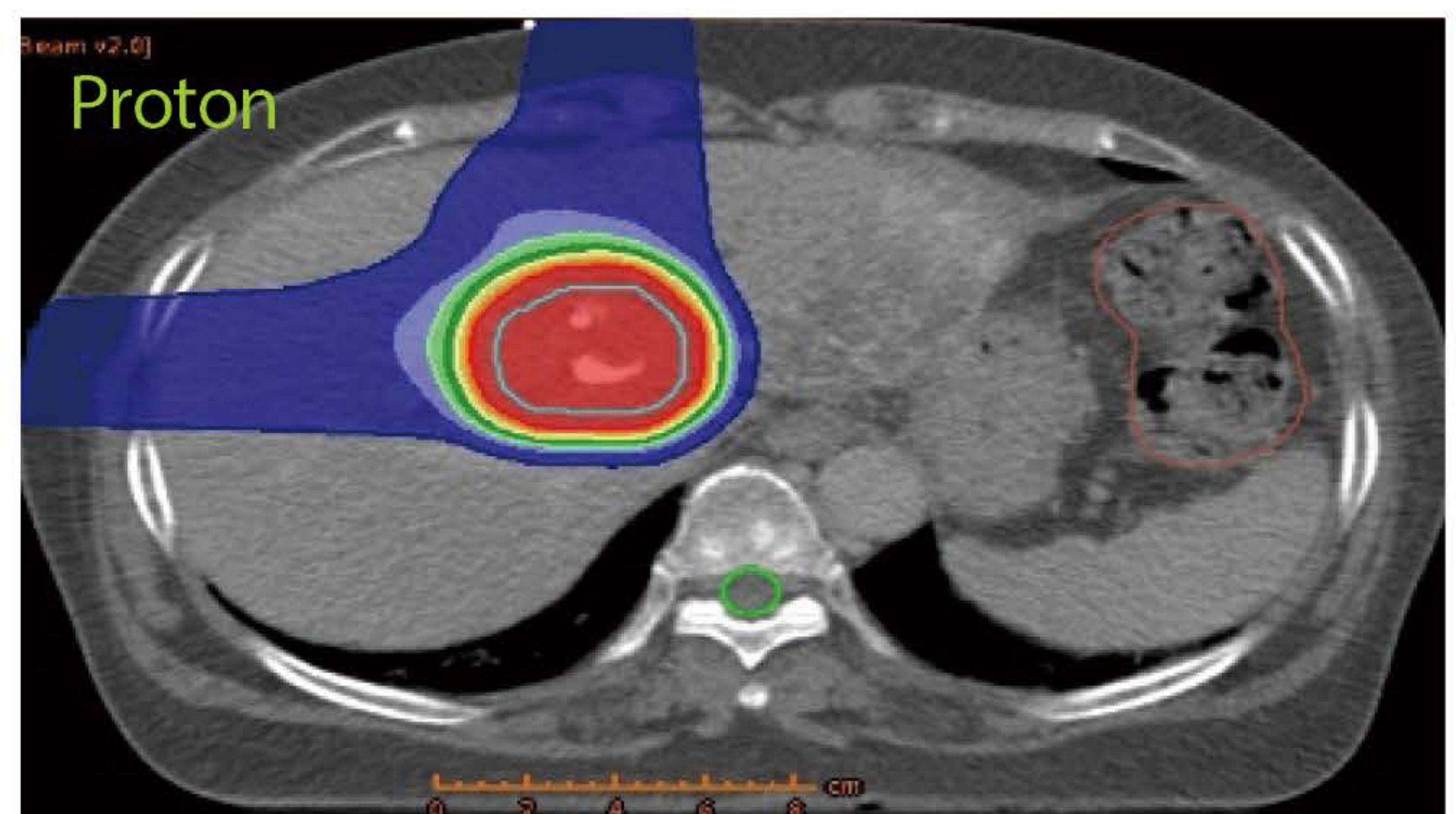
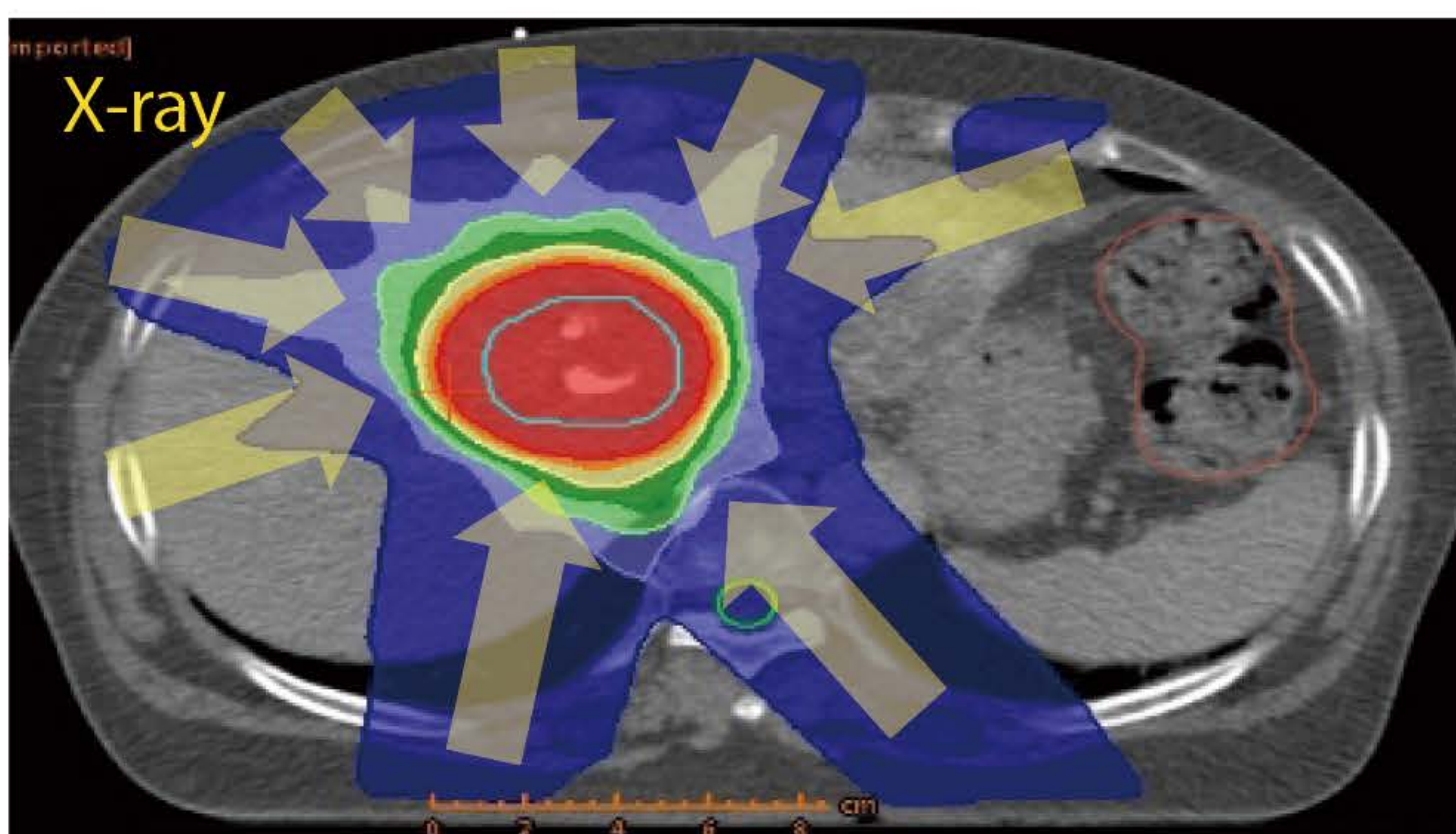
Samsung Proton Therapy Center provides the best precision and accuracy by minimizing errors, which are less than 1 mm from tumor cells, to realize the high-quality proton therapy.

Especially, through the technologies such as Line Scanning, MLC (Multi-Leaf Collimator), etc., the best treatment efficiency and patient safety are secured, and the maximum of 700 patients per year have been treated annually since 2016.



Innovative radiotherapy

Compared with radiotherapy that uses the preexisting X-ray and gamma ray, proton therapy focuses energy on cancer tissue and minimizes the amount of radiation that is applied to normal tissue so that adverse effects and possibilities of having secondary tumors can be lowered using this advanced treatment technology.




I Heart Vascular Stroke Institute that leads the Korean medical system

1st In Korea

- Established as the 1st Korean Heart Vascular Stroke Institute
- Korea's first 3rd generation LVAD artificial heart transplant surgery
- Introduced the hybrid arrhythmia treatment for the first time in Korea

No.1

- The most no. of 3rd generation artificial heart transplant surgeries
- The most no. of echocardiographies for severe and difficult diseases in Korea
- The most no. of procedures for adult moyamoya disease/dural arteriovenous fistula in Korea



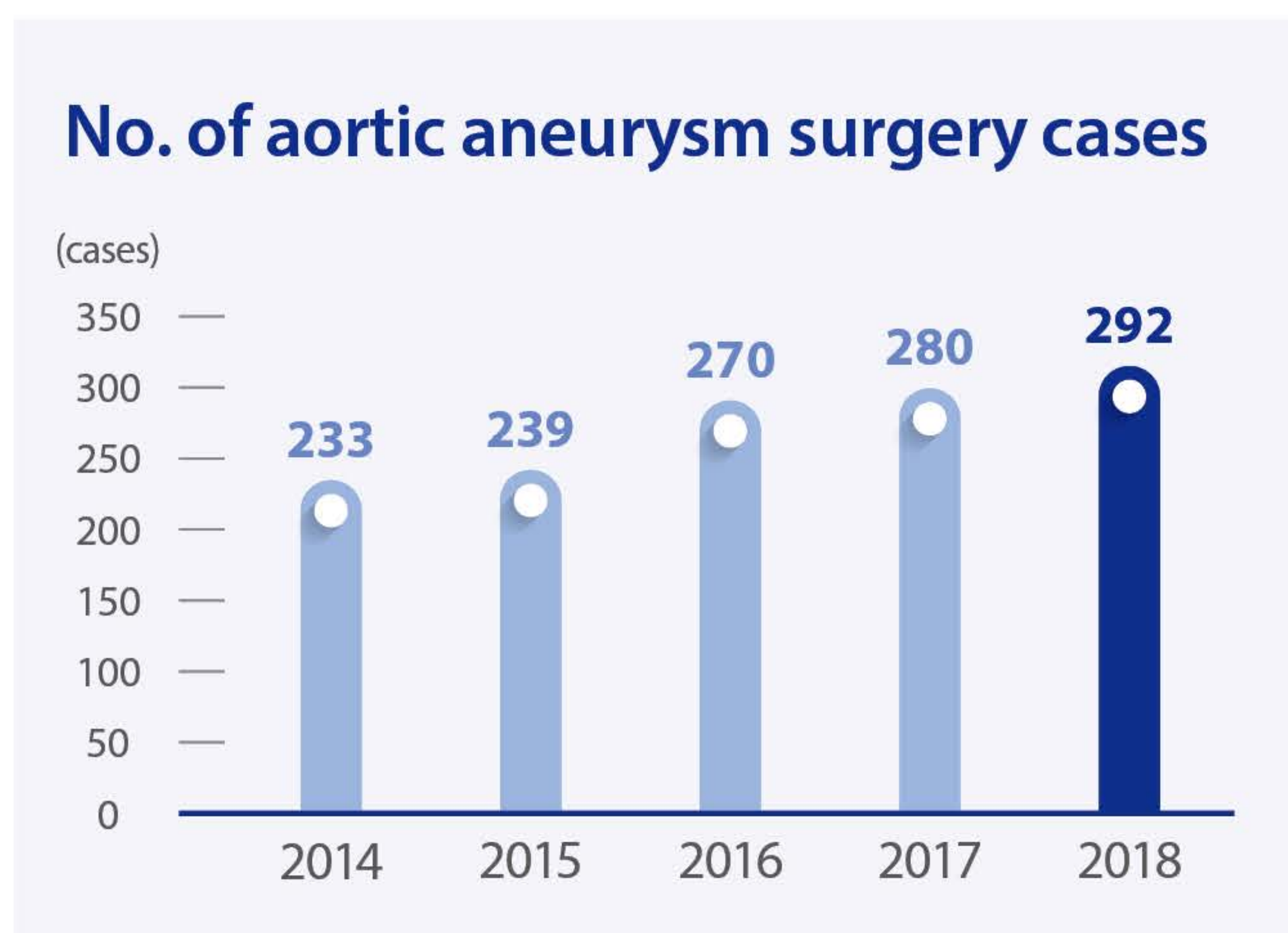
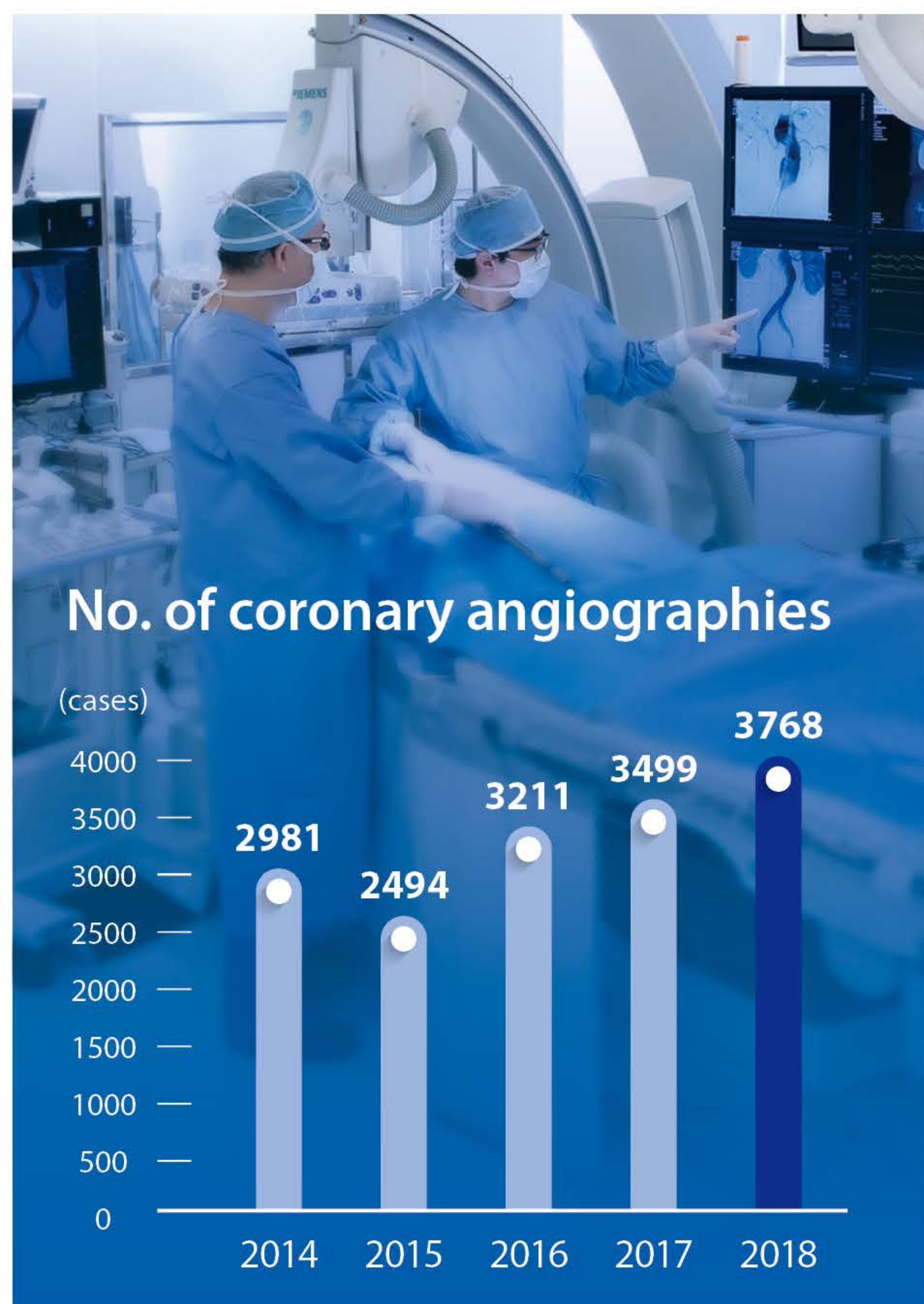
One-Stop Service

- Treatment service by integrating heart, stroke and vessels
- One-stop service of prevention + treatment + rehabilitation + education
- Multi-disciplinary treatment + surgery fast track

One and Only

- Hypertrophic cardiomyopathy clinic
- Various vascular diseases clinic
- Atrial fibrillation clinic
- Amyloidosis clinic

I Core index





| Mother-Child Intensive Care Center

Exclusive treatment center

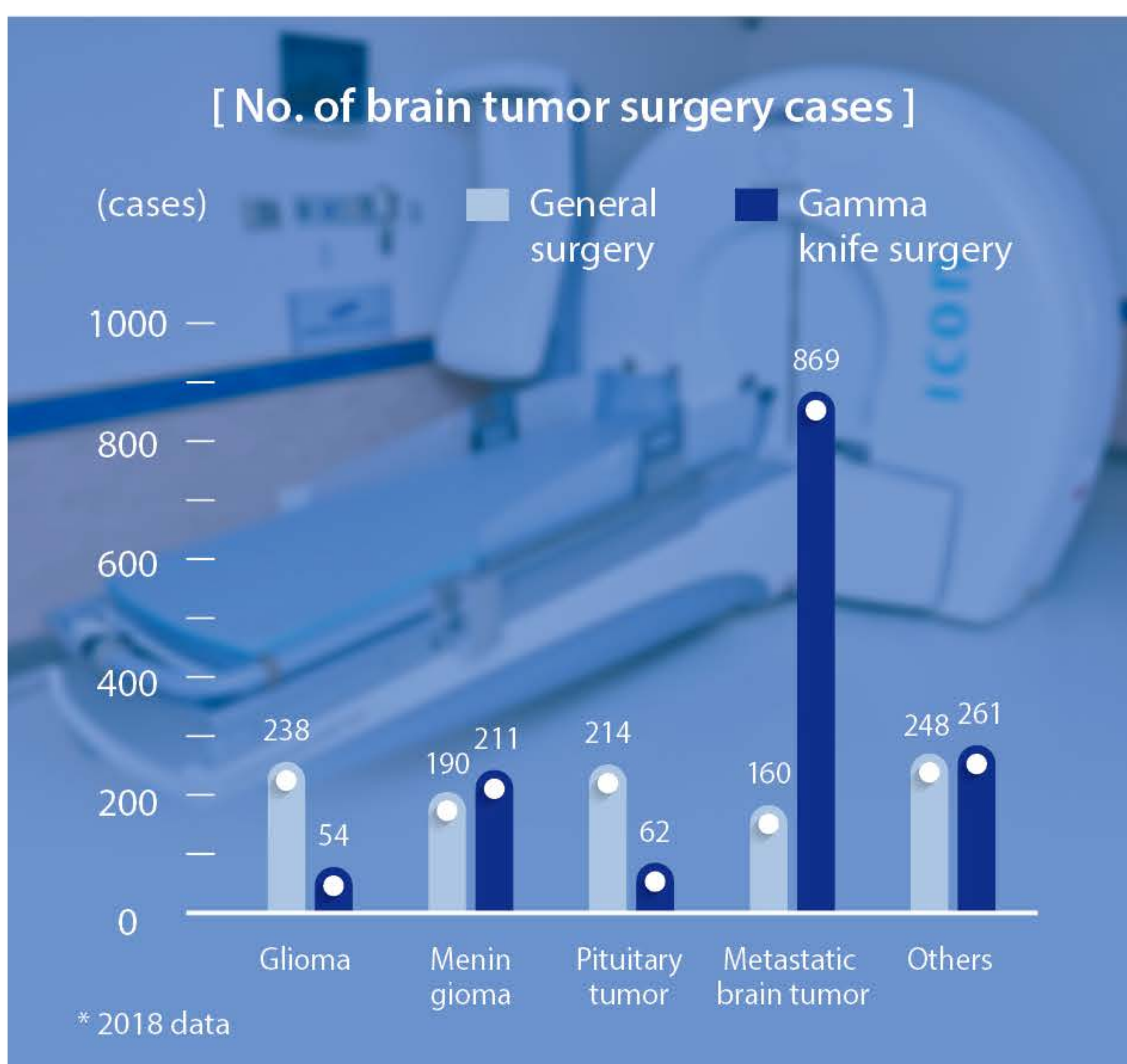
Operating as an exclusive treatment center for high-risk mothers and neonates

Operating the most no. of beds in Korea (71 beds)

“Maternal Fetal Intensive Care Unit (MFICU)” 11 Beds
+ Neonatal Intensive Care Unit (NICU) 60 Beds

Maximizing effects through multi-disciplinary joint treatment

Maximizing performances through joint treatment among departments of pediatric surgery, pediatric cardiothoracic surgery, pediatric plastic surgery, and pediatric urology



| Brain tumor treatment

The most no. of surgery cases in Korea

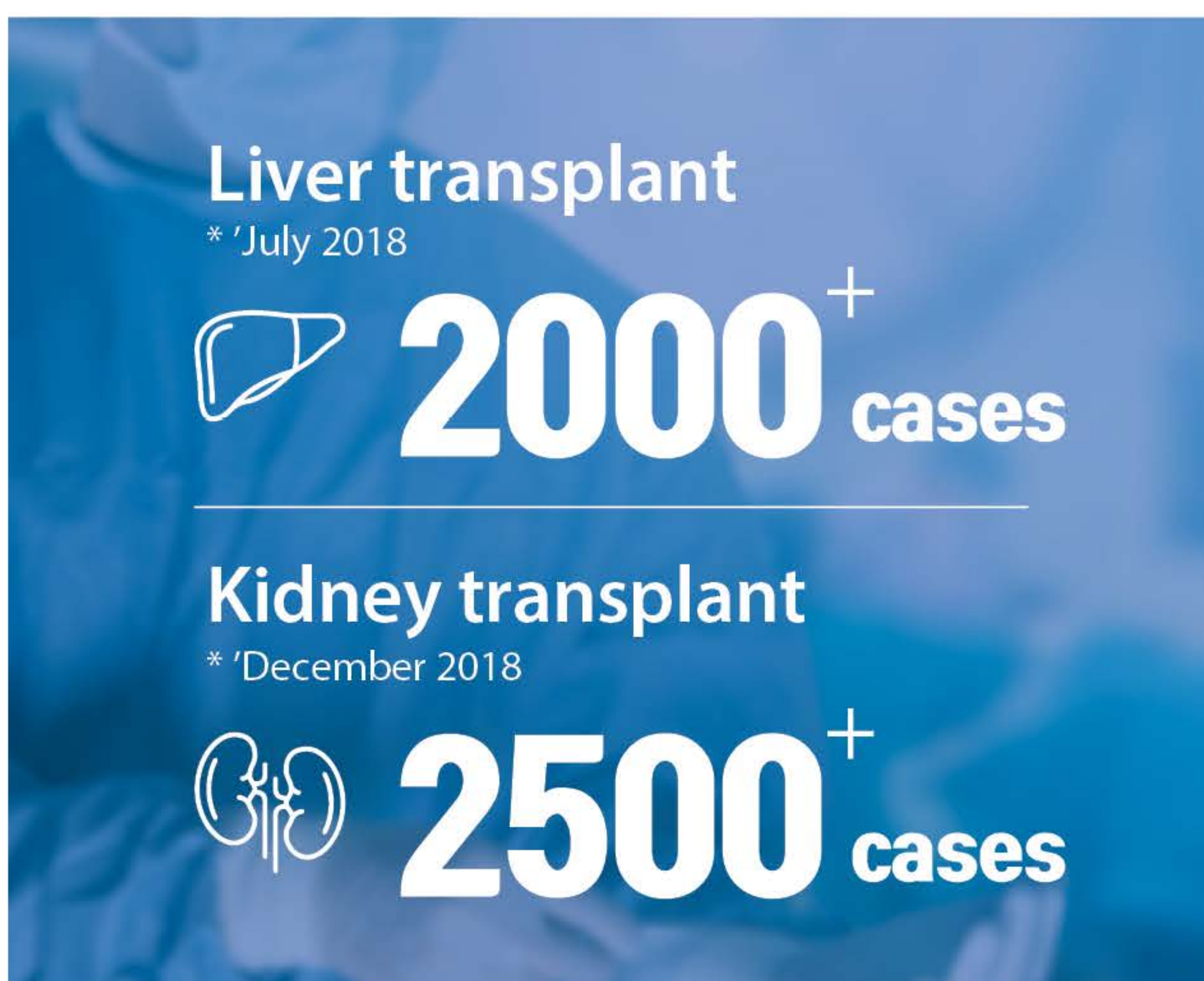
- The most no. of brain tumor surgeries in Korea
- Performed 10,000 gamma knife surgery cases for the first time in Korea (2017)
- Performed 1,000 endoscopic brain tumor surgery cases for the first time in Korea (2016)

Operating specialized clinic for brain tumor

Clinic for pituitary tumor, basal ganglia region tumor, malignant brain tumor, and metastatic brain tumor

High-tech equipment

Two sets of Icon which is the latest model of gamma knife
Introduction of proton therapy equipment

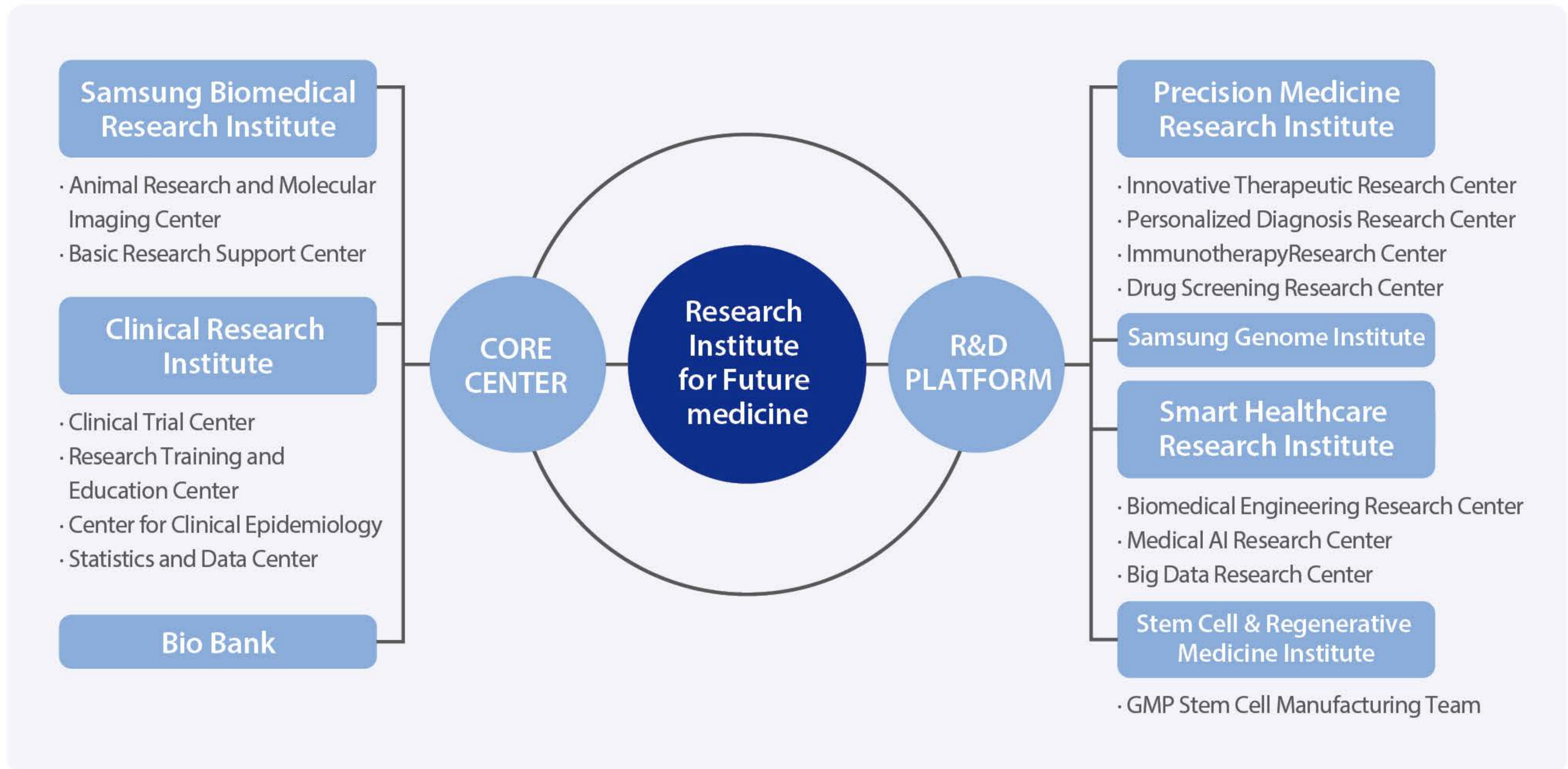


| Organ transplant

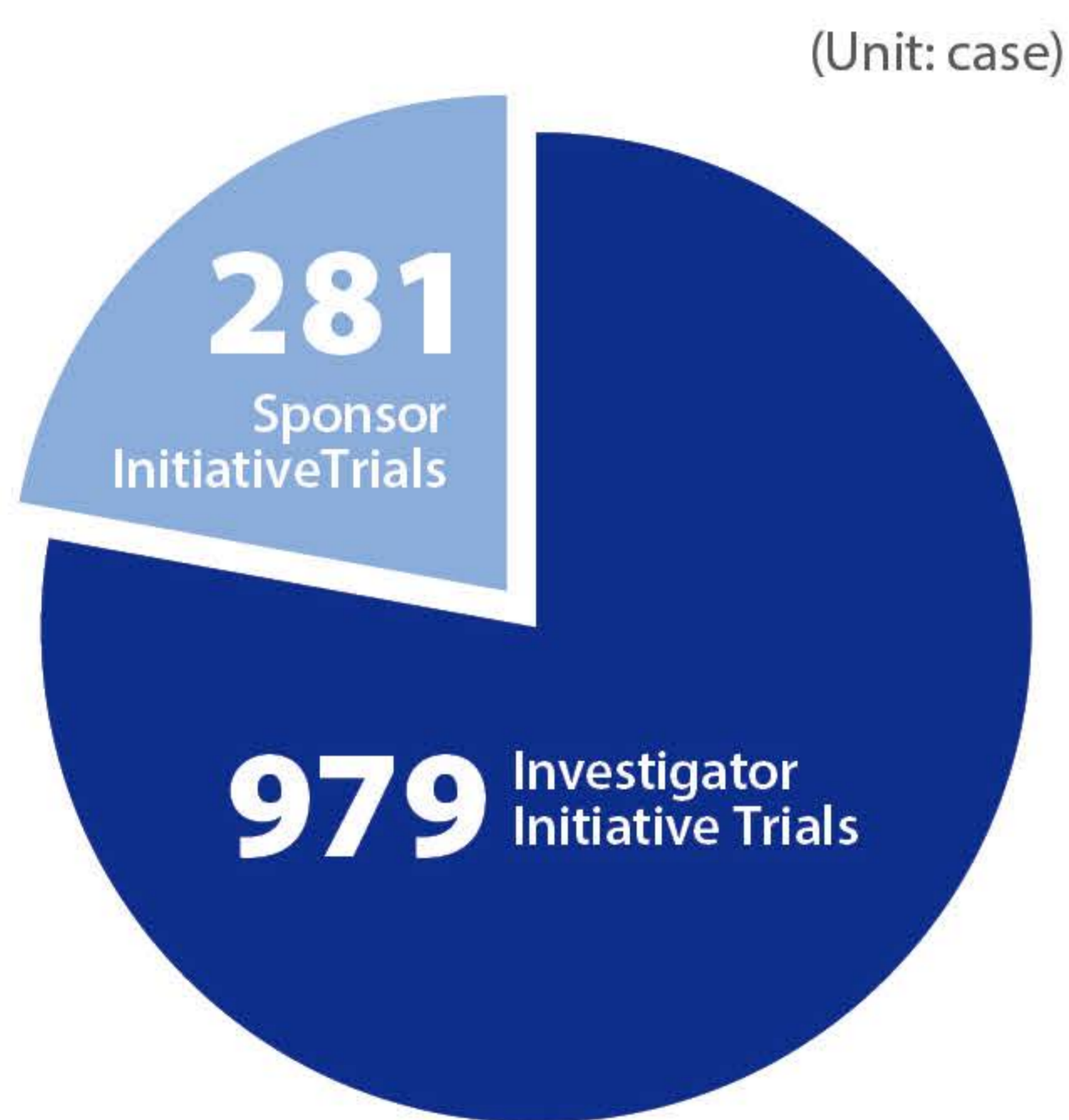
First and leading organ transplant center with endless research and effort

- 2018** World's most no. of laparoscopic donors' liver resection surgeries
- 2010** Korea's first artificial liver development
- 2008** Korea's first brain-dead patient small intestine transplant
- 2004** Korea's first liver cell transplant
- 2002** Korea's first youngest pediatric liver transplant
- 2001** Korea's first liver transplant without blood transfusion
- 1999** Korea's first pancreatic cell homotransplant

Organization chart of Research Institute for Future Medicine



Research status



* 2018 data

No. of clinical trials per area

(Unit: case)

Cancer	403	Cardiology	89
Gastroenterology	132	Urology	73
Neurology	112	Pulmonary	72

* 2018 data



International accreditation (since 2006)

First non-U.S. institution accredited by AAHRPP

* AAHRPP (Association of Human Research Protection Programs, Inc.) is an independent accreditation institution that protects the rights and welfare of research participants and promotes the ethical and sound research of individuals and organizations.



I Faculty status

TOTAL 390 doctors

Physicians **350**

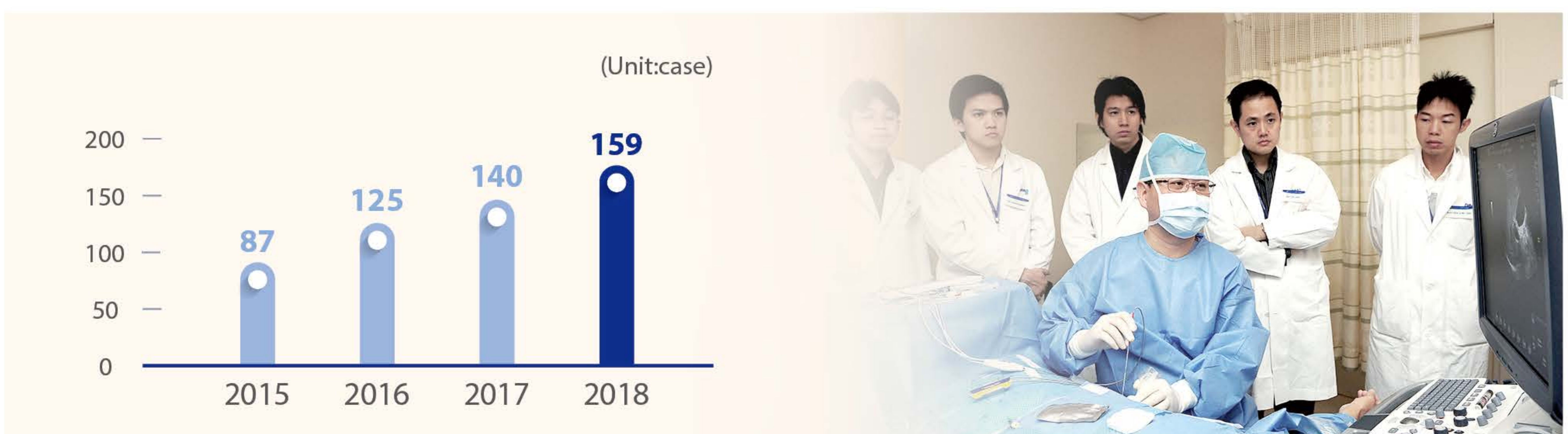
Basic sciences **40**



I International training program

- **Observership program/foreign medical student clinical elective**
 - Subject : ①Having qualifications of a specialist ②Medical student
 - Training period : ①Short term (less than 3 months) ②Long term (3 months to 1 year)
- **Clinical fellowship program for Middle Eastern doctors**
 - Fellowship program based on fellowship training agreement between the Korean Ministry of Health and Welfare and Middle Eastern countries
 - Possible to perform limited hands-on medical practice
- **Customized program**
 - Customized training program based on agreement
- **Short-term clinical training program with fee**
 - ①Liver radiofrequency thermal ablation training (SITAT for Liver Cancer)
 - ④ECMO training
 - ②Gamma knife center training program
 - ⑤Proton therapy training program
 - ③Spine center surgery program
 - ⑥Myelodysplastic syndrome and acute myeloid leukemia treatment training

I International doctors trained in training programs



NO.1 SMC Health Promotion Center

SMC Health Promotion Center is a health check-up center that the most number of foreigners visit in Korea because of excellent services and accurate tests and diagnosis. (Based on the no. of health check-ups of foreigners in tertiary hospitals in 2018)

SMC Health Promotion Center is trusted by many foreigners such as employees of global companies, embassies, etc. who stay in Korea and provides test results and consultation on the same day to reflect needs of foreigners.

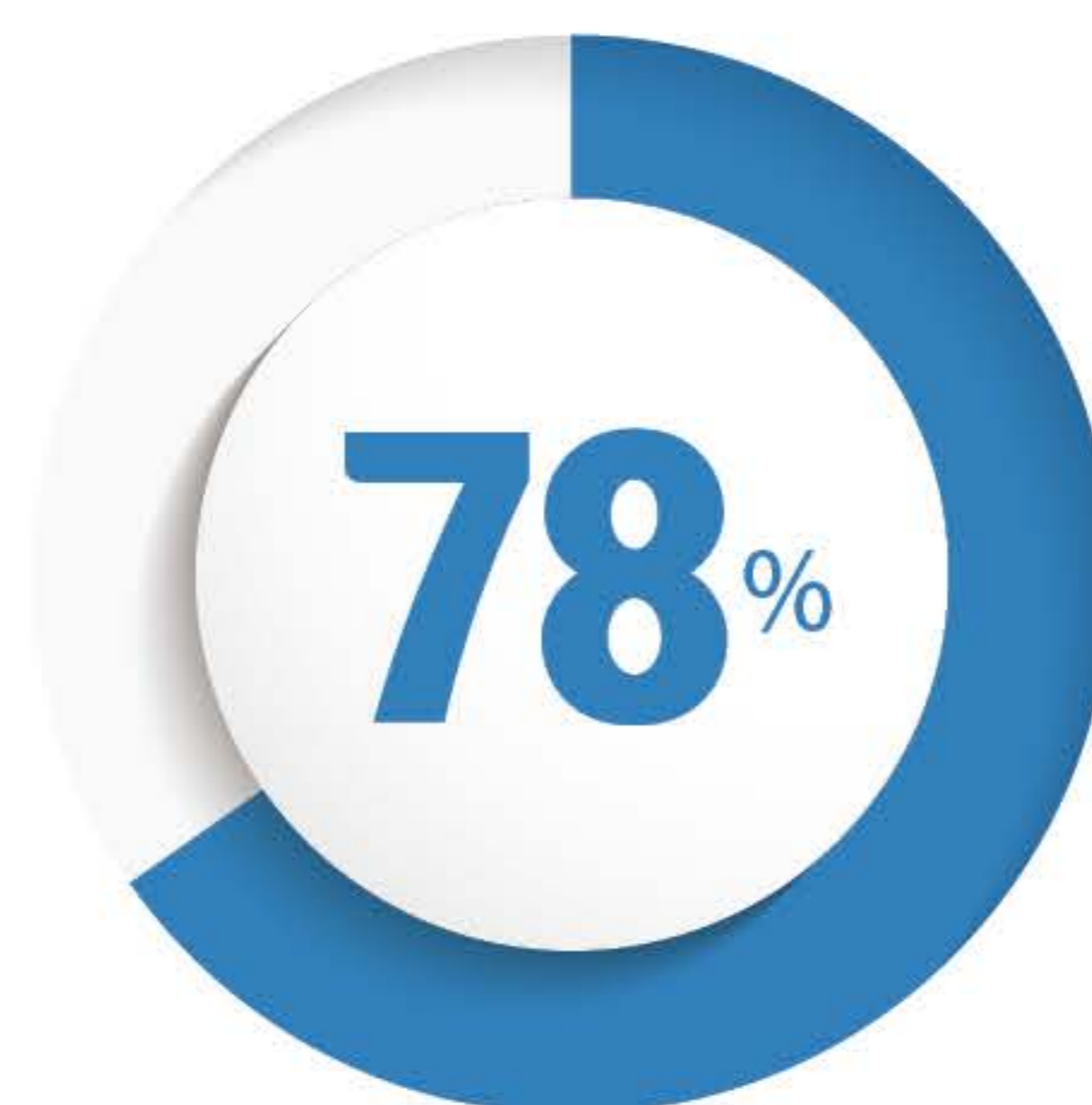


I Best recognition and satisfaction

No. of contracting companies among 100 Korean companies
(Based on sales in 2017)



Ratio of re-visiting examinees compared with total examinees
(Based on sales in 2017)

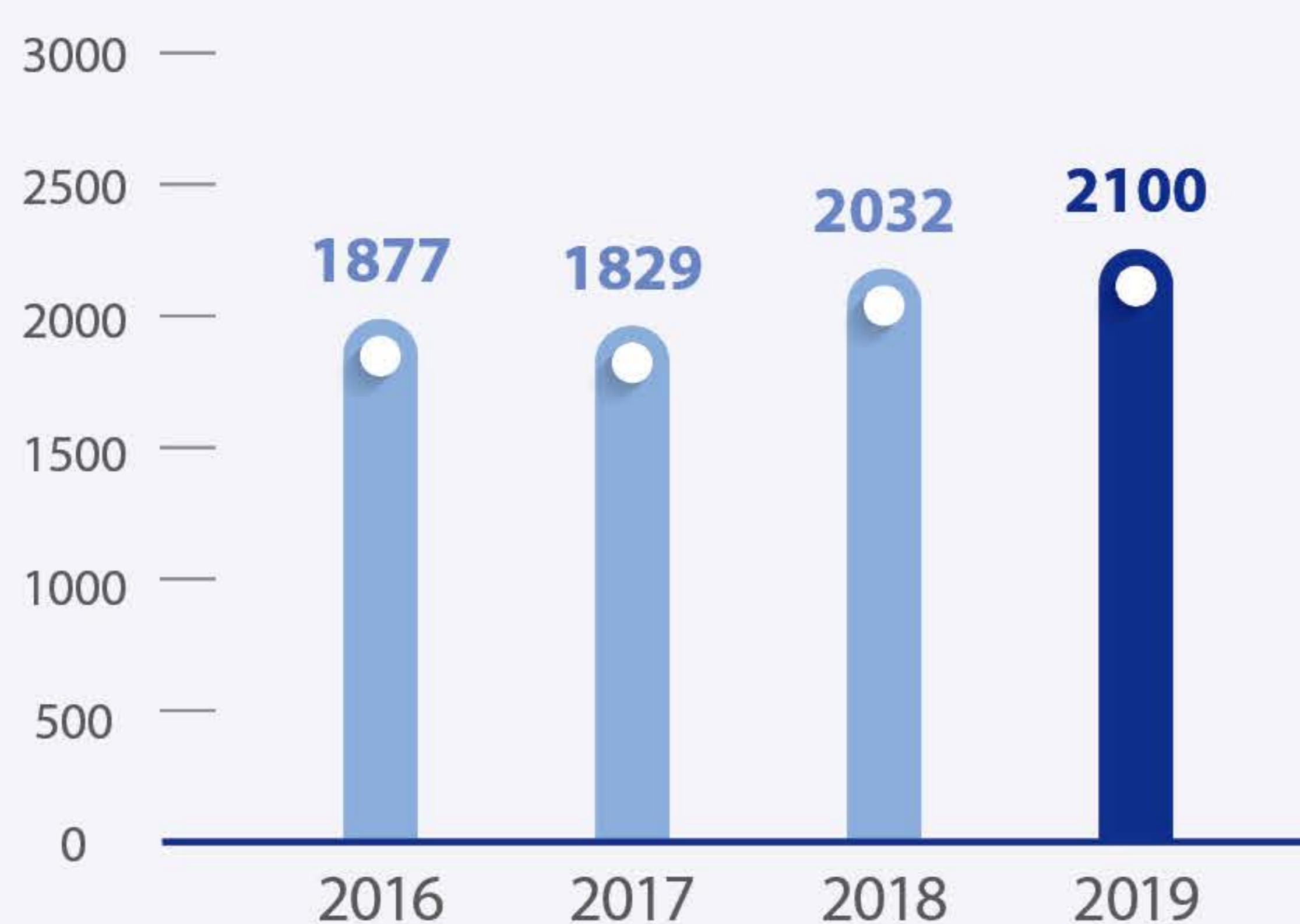


Cancer detection rate compared with national cancer detection rate
(National cancer patient statistics in 2015)

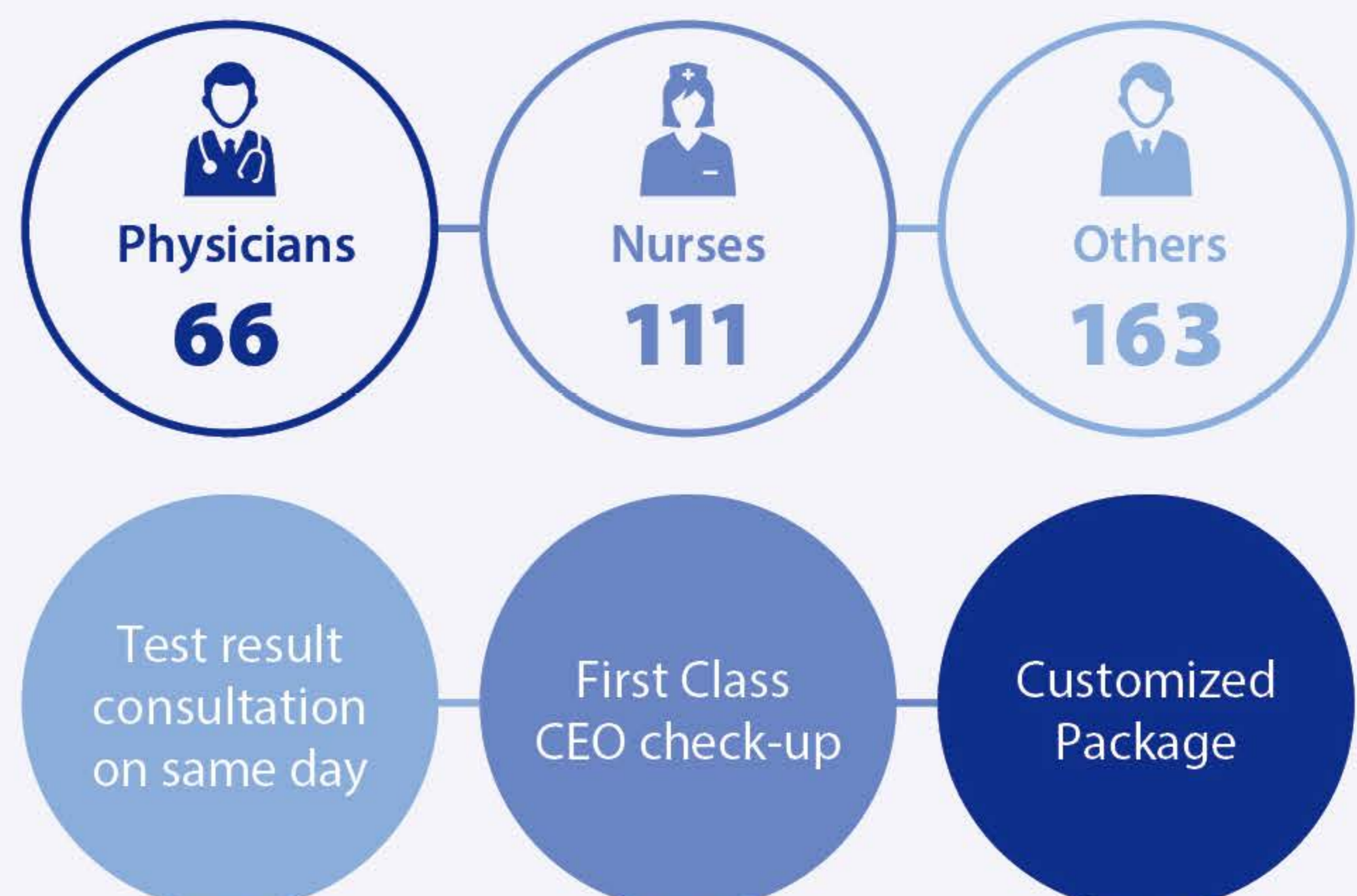


I No. of foreign health checkup

(persons)



I Staffs & services





Home away from home

SMC International Healthcare Center has physicians who are fluent in English. The center operates specialized clinics only for international patients. Also, interpretation services for 5 languages are provided so that international patients can receive the best medical services in Korea

Specialized clinics only for international patients

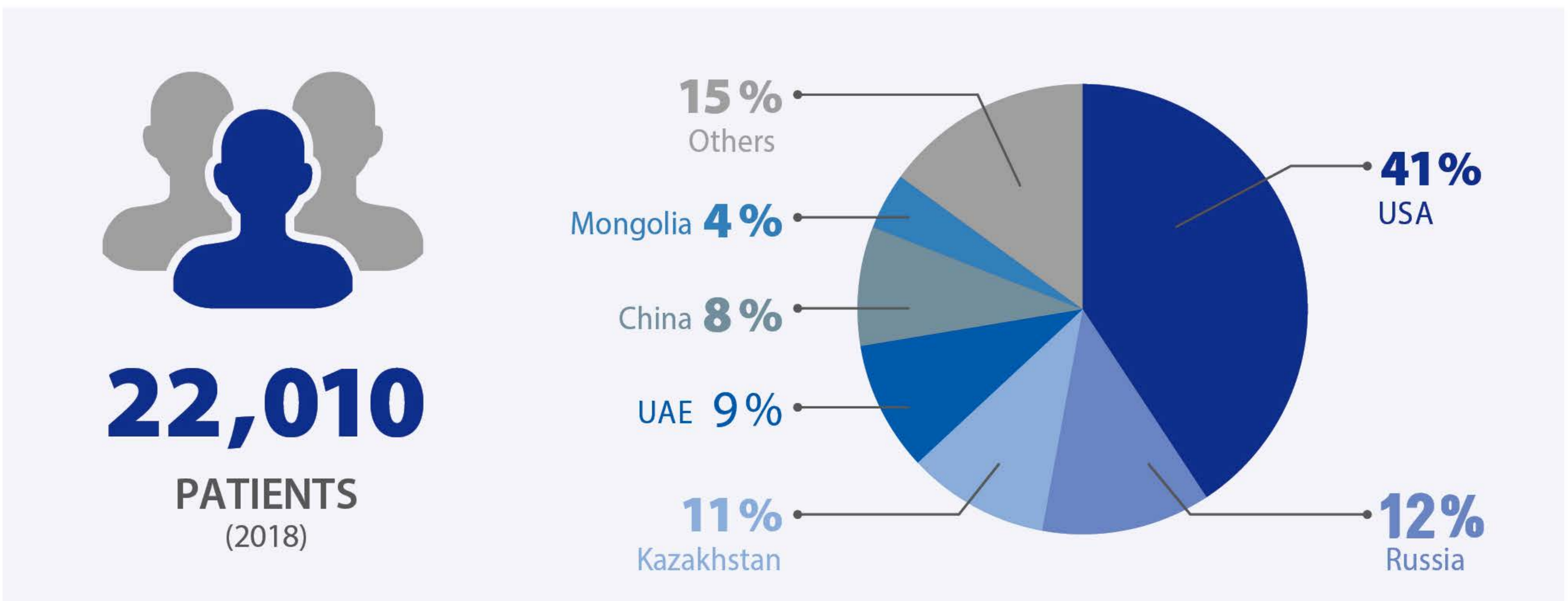
- Family medicine
- Cardiology
- Rheumatology
- Pulmonology
- General medicine
- OB/GYN
- Orthopedics
- Pediatrics
- Rehabilitation

+
About 40 medical departments

International patient service

<p>Interpretation</p> <p>English, Chinese, Russian, Arabic, Mongolian</p>	<p>Accommodation</p> <p>Discounted prices at 21 nearby hotels</p>	<p>Transportation</p> <p>If requested by a patient, pickup service is available</p>
--	--	--

International patient status





SAMSUNG MEDICAL CENTER

[www.samsunghospital.com
/english](http://www.samsunghospital.com/english)

Samsung Medical Center
81, Irwon-ro, Gangnam-gu,
Seoul, South Korea

Phone : +82-2-3410-0200

E-mail : ihs.smc@samsung.com